



**ALASKA DIVISION OF HOMELAND SECURITY &  
EMERGENCY MANAGEMENT**



**SITUATION REPORT 22-055 • FEBRUARY 24, 2022**

Toll-Free 1.800.478.2337

Anchorage Area 907.428.7000

SEOC 907.428.7100

<p><b><u>SEOC Preparedness Level</u></b> Level 1 – Routine Operations</p>	<p><a href="http://ready.alaska.gov">http://ready.alaska.gov</a></p>	<p><b><u>National Terrorism Advisory System:</u></b> <a href="#">Read the NTAS Bulletin here</a></p>
<p><b><u>Maritime Security (MARSEC)</u></b> Level:1-Minimum Appropriate Security Measures</p>	<p><b>WHO Novel Coronavirus Pandemic (COVID-19):</b> <a href="#">2019 Novel Coronavirus</a></p>	<p><b><u>Alaska Military Installation Force Protection Level:</u></b> FPCON Bravo</p>

(Significant changes from previous situation reports are in red.)

**Significant Issues:**

None.

**Current Operations:**

**Interior Winter Storms - Disaster Assistance Centers**

Under Governor Dunleavy’s January 3, 2022 declaration of state disaster for winter storms, in-person Disaster Assistance Centers for the state’s Individual Assistance program will open in the following communities over the next two weeks:

Delta Junction – Wednesday, February 23, through Thursday, February 24 from 9:00 am to 5:00 pm at the Delta Junction Community Center.

Fairbanks – Tuesday, March 1, through Thursday, March 3 from 9:00 am to 5:00 pm at the Fairbanks National Guard Armory.

Online and telephone registration is also available.

**Threat Level Changes:**

None.

**State of Alaska Department of Health and Social Services (DHSS)**

DHSS is now leading the State of Alaska COVID-19 Recovery through Department Operations, supported by SEOC and other state departments as required.

For current COVID-19 information, see:

<https://covid19.alaska.gov/>

<https://www.cdc.gov/coronavirus/2019-ncov/index.html>

## **NTAS BULLETIN**

To read current or expired advisories, click the link below:

<https://www.dhs.gov/national-terrorism-advisory-system>

## **Travel Alerts and Conditions**

For current driving conditions dial 511 or link to <http://511.alaska.gov/>

## **Barry Arm Landslide / Tsunami Risk**

For the latest information on the Barry Arm Landslide and Tsunami risk, click here:

[DGGG Barry Arm Landslide and Tsunami Hazard](#)

## **Recent Earthquakes**

USGS Earthquake Information: <http://earthquake.usgs.gov/>

National Tsunami Warning Center: <http://tsunami.gov/>

## **Alaska Volcanoes**

**Davidof** Alert Level: **Advisory** and Aviation Color Code: **Yellow**

**Great Sitkin** Alert Level: **Watch** and Aviation Color Code: **Orange**

**Pavlof** Alert Level: **Watch** and Aviation Color Code: **Orange**

**Semisopchnoi** Alert Level: **Watch** and Aviation Color Code: **Orange**

For Alaska Volcano updates, go to: <https://www.avo.alaska.edu/>

## **Air Quality Index (AQI) Advisories**

For the most up to date Air Quality Index Advisories:

<http://dec.alaska.gov/Applications/Air/airtoolsweb/Home/Index>

## **Spills of Oil and Hazardous Substances**

The ADEC Spill Prevention and Response page is located at:

<http://dec.alaska.gov/spar/ppr/spill-information/response/>

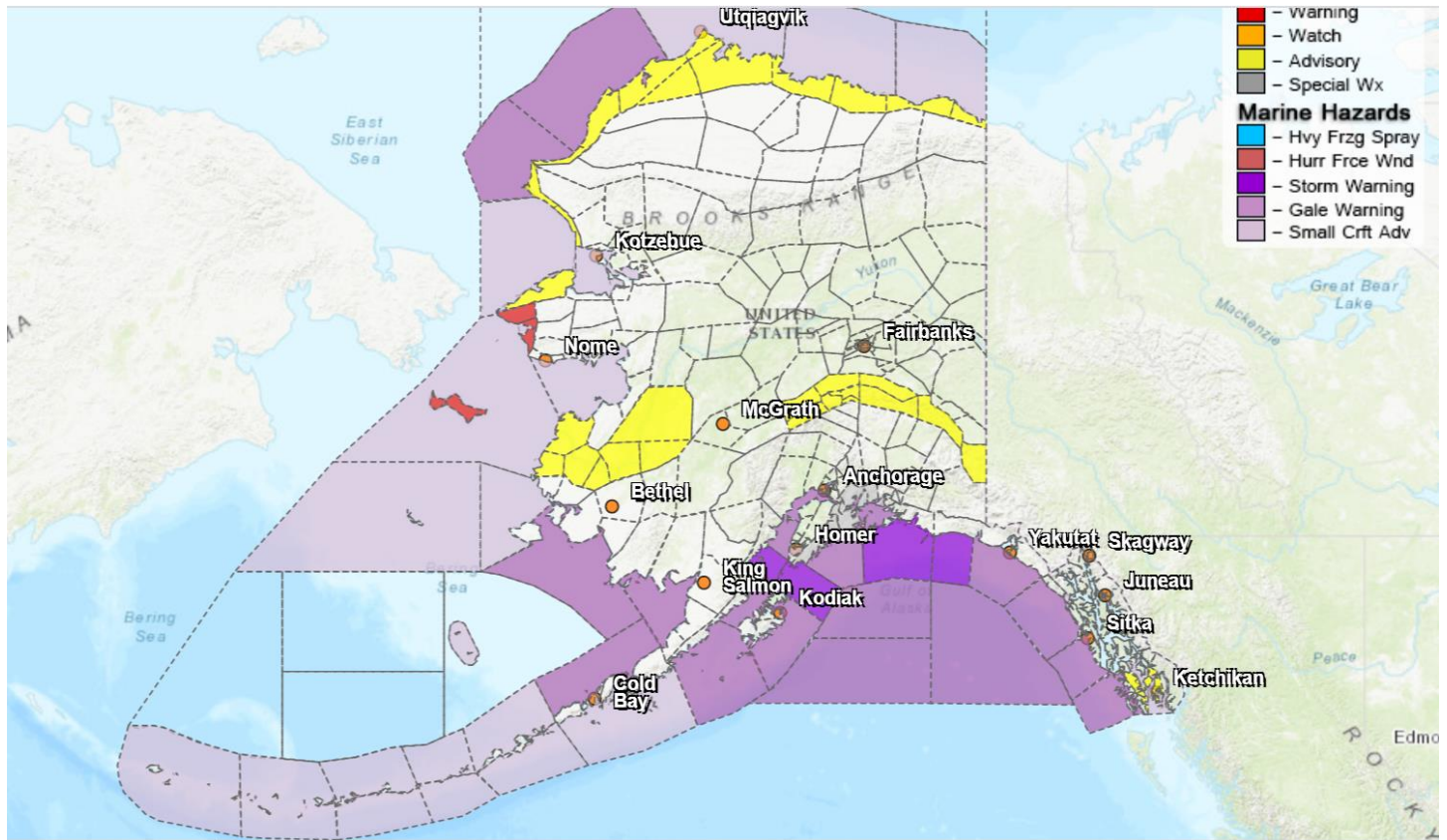
## **Alaska Cyber Security Information**

State Employees may sign up for cyber security notifications and alerts at

<https://oit.alaska.gov/security>

CISA-Cybersecurity Services and Tools: [www.cisa.gov/free-cybersecurity-services-and-tools](http://www.cisa.gov/free-cybersecurity-services-and-tools)

## Significant Weather:



A Winter Storm Warning remains in effect until 6pm today for Saint Lawrence Island and the Bering Strait Coast, for heavy mixed precipitation.

A Winter Weather Advisory for the Chukchi Sea Coast remains in effect until 6pm tonight for light freezing rain and blowing snow.

Winter Weather Advisories are in effect today and tomorrow for the Western Arctic Coast, Northern Arctic Coast, Central and Eastern Beaufort Sea Coast for blowing snow and low visibility.

Winter Weather Advisories are in effect today and tomorrow for the, Yukon Delta, and Lower Yukon Valley, for snow and light freezing rain.

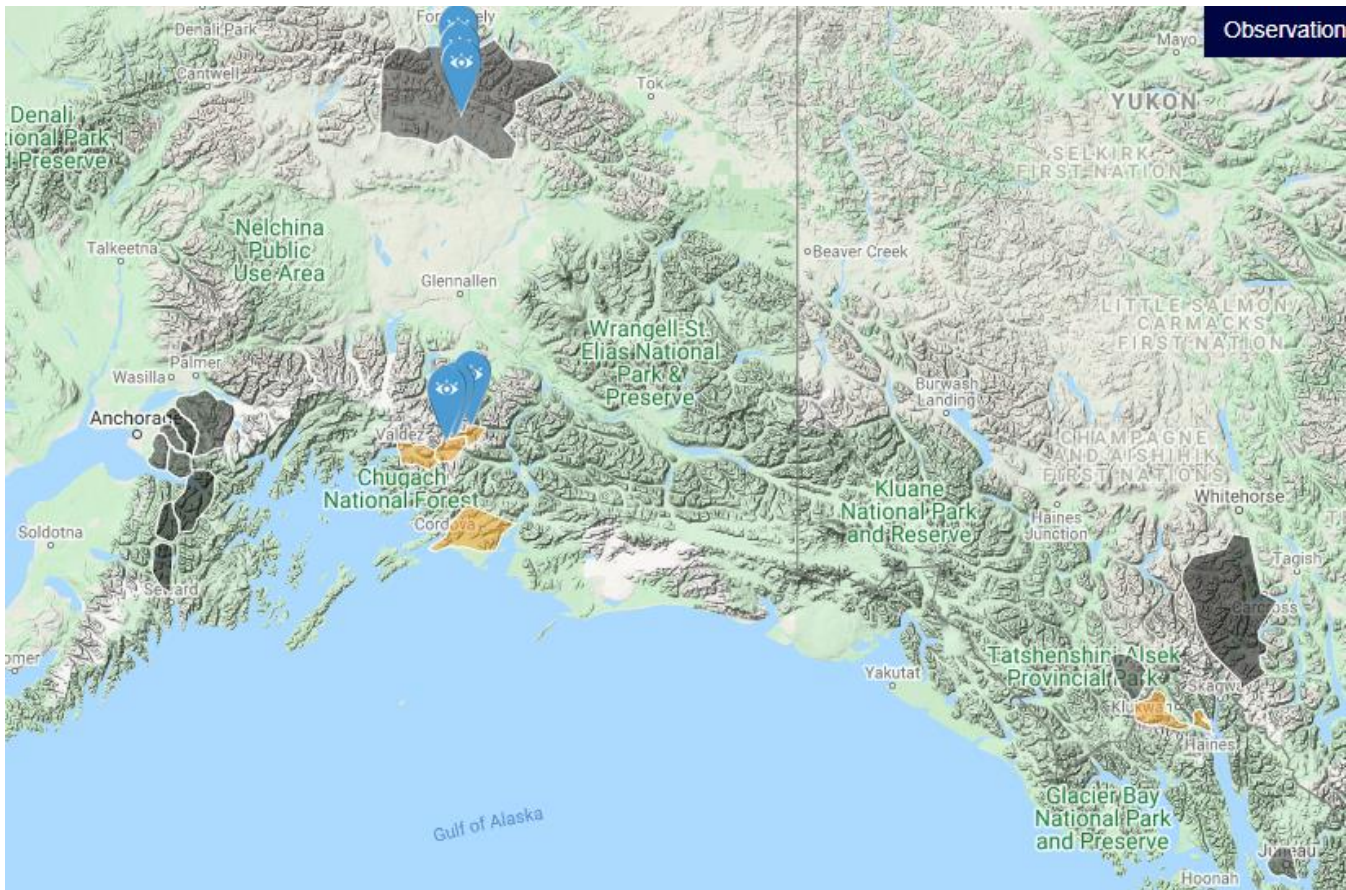
A Wind Advisory is in effect until 6 AM Friday for the Eastern Alaska Range, and Denali for south winds around 40mph with gusts up to 55mph.

Dense Fog Advisories are in effect until 9am today for Ketchikan and Southern Inner Channels.

A special weather statement has been issued for the Western Prince William Sound due to a series of surface fronts that will impact parts of Southcentral throughout the next several days with rain along the coast, a mix of rain/snow for parts of interior Kenai Peninsula, and snow at higher elevations. Precipitation is expected to be heaviest Thursday through Friday afternoon before gradually tapering off Saturday morning. Total rainfall amounts of 5 to 8 inches are possible for Whittier and Portage Valley. For Seward, 1.5 to 3.5 inches of rain is possible through Saturday morning. Heavy rainfall, combined with melting snow, may create standing water on roadways where poor drainage exists.

For more information and the most current weather, Watches / Warnings / Advisories go to:  
<http://www.weather.gov/arh>.

## Avalanche Forecast:



There are areas near Haines, Valdez and Cordova with considerable risk, and near Hatcher Pass with high risk.

Check the Avalanche Forecast Center closest to your area for the most up to date information on avalanche potential. <https://alaskasnow.org> or <https://www.weather.gov/afc/avalancheweather>

**The Next Situation Report:** will be **25** February 2022. A significant change in the situation or the threat level will prompt an interim report.

This report is posted on the internet at <https://ready.alaska.gov/sitrep>. To register for email distribution, go to <http://list.state.ak.us/mailman/listinfo/dhsem.situation.report>. Direct questions regarding this report to the SEOC at 907-428-7100 or [seoc@alaska.gov](mailto:seoc@alaska.gov)